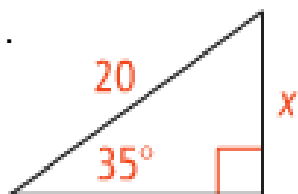
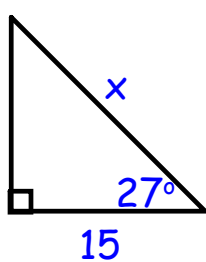


Warm Ups

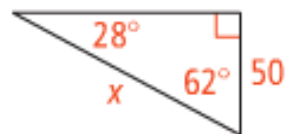
1.



2.

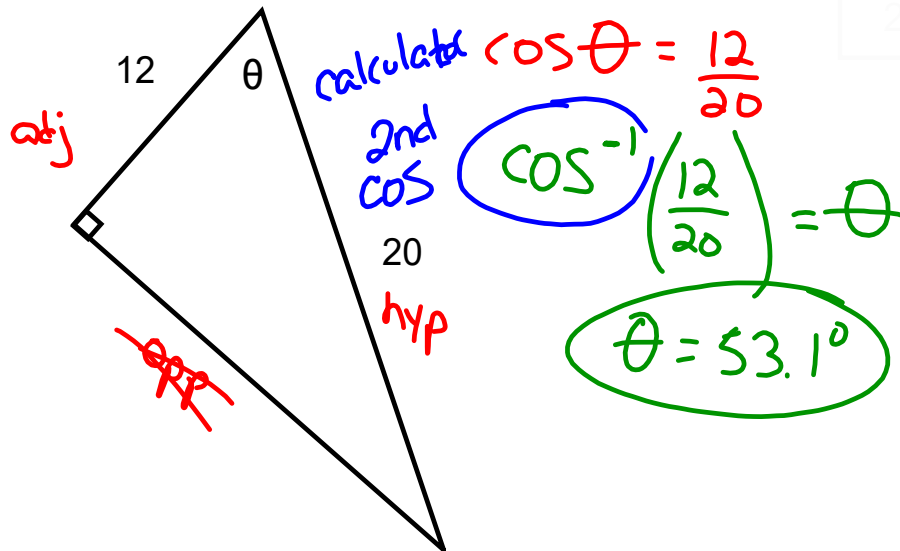


3.

8.3 Trigonometry
Finding Angles

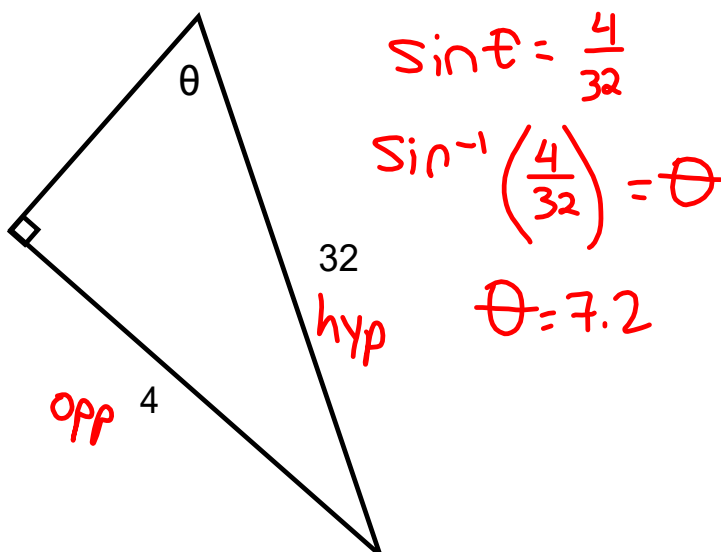
Trigonometry

To find an angle if you know the side lengths, you have to use inverse operations.



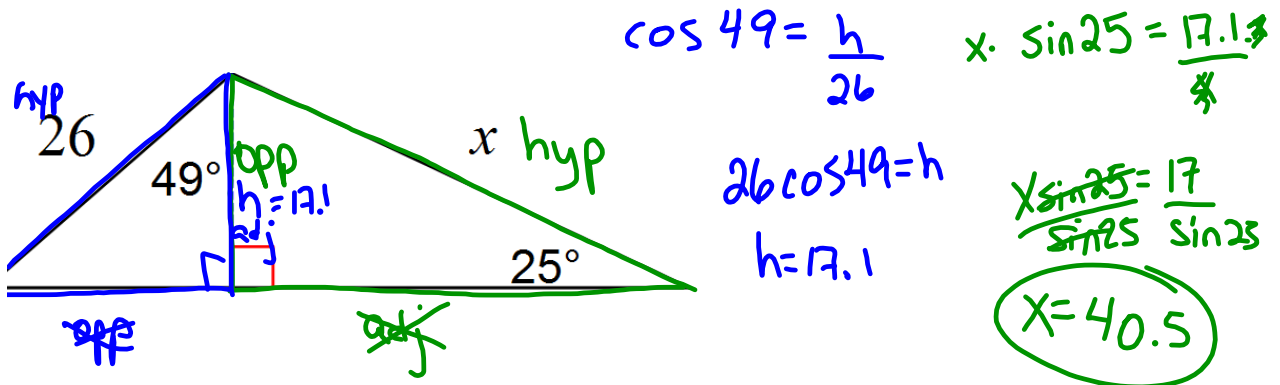
Trigonometry

To find an angle if you know the side lengths, you have to use inverse operations.



Trigonometry

Find the missing side length. Round to the nearest tenth.



Trigonometry

Find the missing side length. Round to the nearest tenth.

